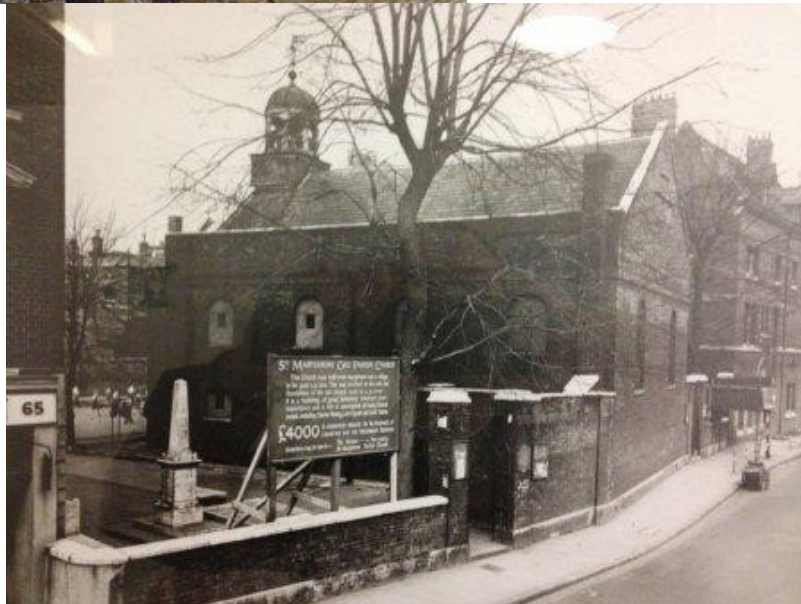


This is the fourth church to serve this parish. The first, circa 1200, dedicated to St John the Evangelist, v

In 1400 it was demolished and a new church built nearer to the village of Marylebone. This was on the si



This church was dedicated to St Mary the Virgin, by the bourne; the Ty bourne being a stream running fr

[Short History of the Church \(pdf\)](#) [Full History of the Church \(pdf\)](#) [History of the Rectory](#)

[Download a Topographical and Historical Account of the Parish of St-Mary-le-Bone \(pdf\)](#)



The great Elizabethan philosopher Francis Bacon (1561-1626) was married there in 1606. The interior  
The original of the pew panel depicted in that picture can be seen at the back of the church in the north

Short History of the church in other languages

[German](#) - [Portuguese](#) - [Spanish](#) - [Russian](#) - [Finnish](#) - [French](#) - [Italian](#) - [Dutch](#)



Parish boundary stone of 1821 in Regent's Park



[UK History Website](#) [Oxford Street and its Northern Tributaries&nbsp;Part 1](#) and [Part 2](#)

**Land of the church of Barking from Domesday Book.**

IN OSULUESTANE [OSSULSTONE] HUNDRED

The Abbess of Barking holds Tiburne [Tyburn] of the king's writ assessed at 5 hides. There is land; for herp



**The Parish Church in 1817**